

APPLICATIONS

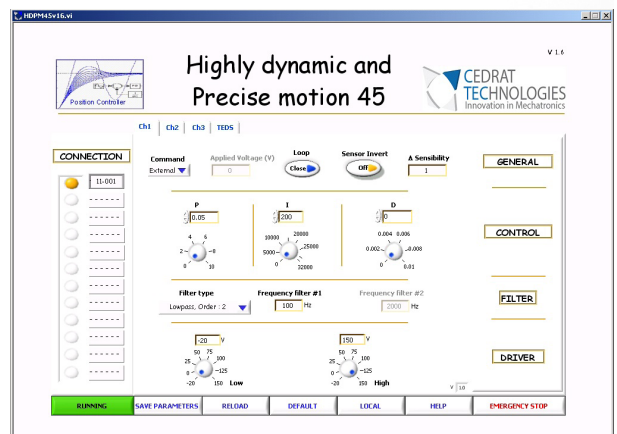
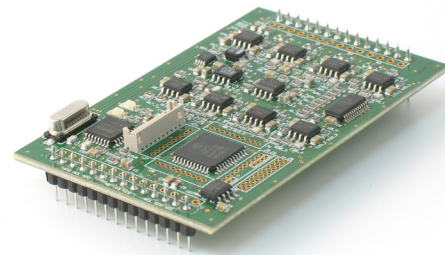
- > Actuators position control
- > Active control of vibrations

KEY-FEATURES

- > Daughter board for CTEC solutions
- > Cost-effective
- > PID control with stabilizing filters
- > 16bits resolution
- > 10kSps sampling rate
- > Controller tuning with GUI through USB port

RELATED PRODUCTS

- > CTEC power amplifiers
- > CTEC sensor conditioners



SPECIFICATIONS

PARAMETER	TYPICAL VALUE	UNIT
General		
Number of control channels	1	
Number of analog inputs	2	
Number of analog outputs	1	
Digital communication	USB	
Graphical User Interface	CTEC HDP45	
Digital control		
Control strategy	Tunable PID + Stabilizing filters	
Stabilizing filters	Tunable lowpass and notch	
List of stabilizing filters configurations	No filter 2nd order lowpass filter 2nd order notch filter 2 x 2nd order notch filters 4th order notch filter	
Sampling rate	10	kSps
Digital resolution	16	bits
Analog inputs		
Voltage range	-10 ... +10	V
Small signals bandwidth (-3dB)	106	kHz
Analog outputs		
Voltage range	-10 ... +10	V
Small signals bandwidth (-3dB)	4,8	kHz

MISCELLANEOUS

Board compatibility	CA45, LA75, SA75, LA24, and SA24 series	
Operating temperature range	0 ... +40	°C
Storage temperature range	-10 ... +50	°C
Warm up time	15	min
Computer interface	USB type B	

INCLUDED ACCESSORIES

Front panel USB hub	With type B connector	
Mass	0,09	kg
Front panel dimensions	10F wide, 3U high	
USB cable	Type B to Type A	
HDPM45 Graphical User Interface	Windows compatibility	

DRAWINGS

